

**FOLKARTBOYALIK**  
Ç E Ş M E

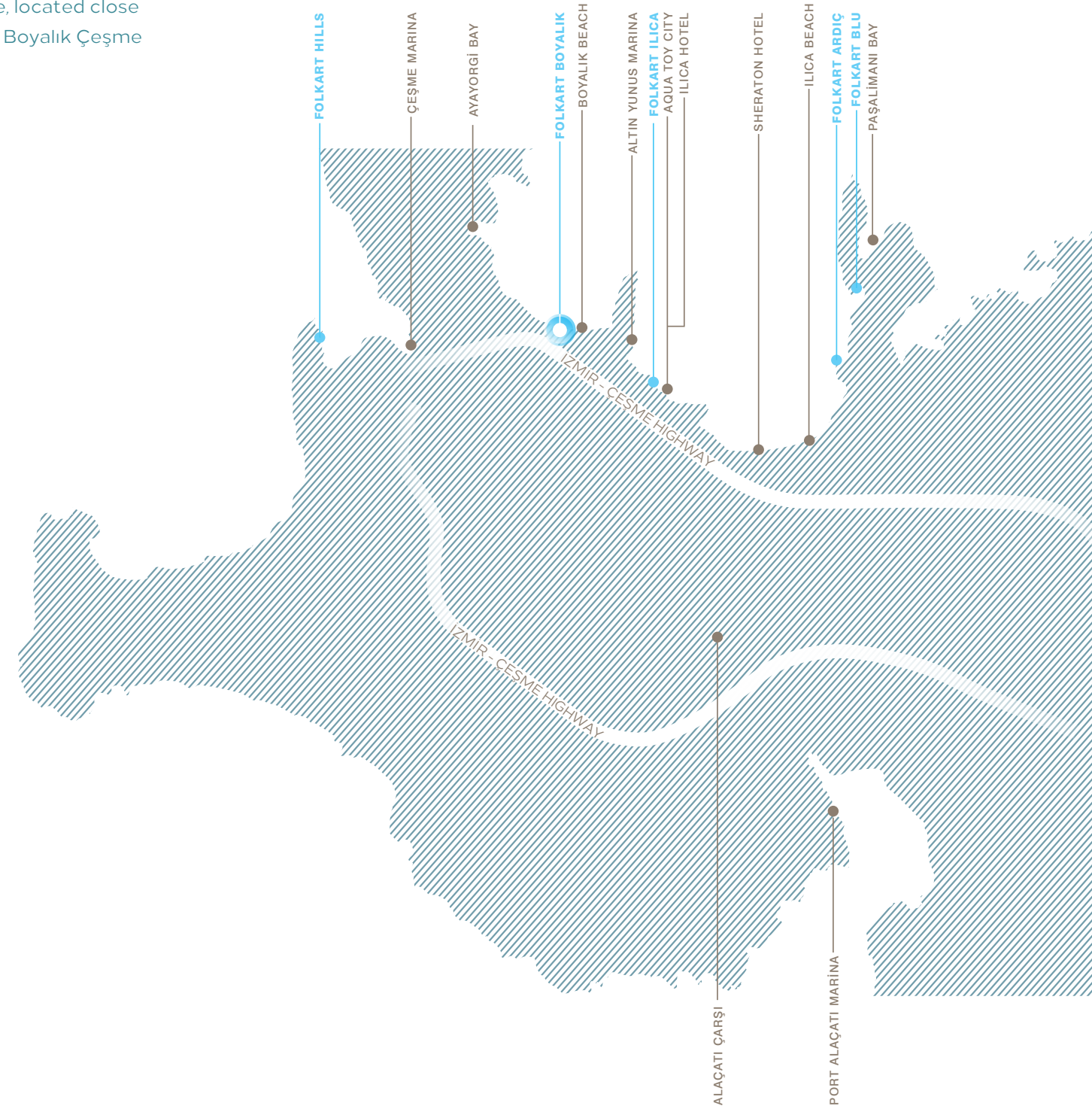
FOLKART BOYALIK ÇEŞME  
GATEWAY TO THE SEA

FOLKARTBOYALIK  
ÇEŞME

# CENTER OF LIFE, RIGHT HERE...

You are at the center of an exclusive life at Folkart Boyalık Çeşme, located close to Çeşme's world-renowned coves, beaches, and marinas. Folkart Boyalık Çeşme is a place where life is enjoyed to the fullest.

BOYALIK BEACH.....	.300 m
ALTIN YUNUS MARINA .....	.1km
AQUA TOY CITY.....	.2km
AYAYORGİ BAY.....	.2km
ÇEŞME MARINA .....	.35km
ILICA BEACH .....	.4km
SHERATON HOTEL .....	.4km
ALAÇATI MARKET.....	.5km
PAŞALİMANI BAY.....	.9km
PORT ALAÇATI .....	.9km



# ÇEŞME



## ÇEŞME CALLS OUT TO YOU.

Çeşme is the most sought-after holiday destination in Izmir and a place bestowed with natural wonders. It offers a variety of experiences to visitors around the clock, and invites you to enjoy an exciting lifestyle throughout the year. Embark on a distinguished lifestyle at Çeşme/Boyalık, stretching all the way to the sea in the midst of its magnificent beauty.

## RESIDENCY LIVING, NOW EVEN MORE EXCLUSIVE

Prevailing over Çeşme; Folkart Boyalık Çeşme is designed for those who wish to revel in a distinguished residency life with a modern luxury approach.





**FOLKARTBOYALIK**  
Ç E Ş M E



## A LIFETIME OF ENJOYMENT

Each morning you will arise to a shimmering sun and a sea blessed with a million hues of blue at Folkart Boyalık Çeşme. As you sip your evening coffee watching a spectacular sunset, a gentle Çeşme breeze flowing through your home, you will appreciate this life even more.







## IN THE MIDST OF BLUE AND GREEN..

Deck and garden areas complete the alluring architecture of Folkart Boyalık Çeşme, tempting you, your family, and loved ones, to join a privileged life.





**FOLKARTBOYALIK**  
Ç E Ş M E



**FOLKARTBOYALIK**  
Ç E Ş M E





# EVERY MOMENT FULFILLED

Folkart Boyalık Çeşme is much more than just a residence project. It's the Folkart interpretation of an exceptional and exciting lifestyle, offering a fitness center, sauna, spa, cafe, outdoor and indoor swimming pools, and open green spaces.

## Social living area:

- Outdoor swimming pool
- Children's pool
- Outdoor-indoor cafeteria
- Indoor parking lot
- Fitness, pilates and yoga centers
- Spa and sauna
- Lobby and resting area
- 24-hour security
- Camera security system

## Features;

- Built-in appliances
- VRV heating and cooling system
- Automated water and electricity reading
- One-car parking for 1+1 suites
- Two-car parking for 2+1, 3+1, and 4+1 suites
- Generator (for all areas and suites)
- Indoor parking lot OGS entrance/exit

## Common Area services

- Home management, featuring 10-inch touch screens with IP video intercom at residence entrances, as well as concierge and housekeeping services.
- Lighting, air conditioning and curtain controls designed to appeal to the personal taste of each resident.
- With 4 sight service, convenient and secure system management of any number of mobile devices and computers from anywhere in the world.
- Data transfer to mobile devices with email and push notification services.
- Air conditioning control from outside the home with remote control technology.
- Remote 3G-technology security camera monitoring via mobile devices, touch screen and television interfaces.
- Folkart Boyalık Çeşme employs the Control 4 system that supports IP, Wi-Fi, RF and KNX operation protocols.





**FOLKARTBOYALIK**  
Ç E Ş M E



# LAYOUT PLAN

Folkart Boyalık Çeşme combines 66 units with a range of apartment options from 1+1 to 4+1. The amount of space may vary, but the privileges and pleasures are the same.



- 1 Entrance
- 2 Indoor Parking Lot Entrance
- 3 Indoor Parking Lot Entrance
- 4 Indoor Pool
- 5 Pilates Center
- 6 Fitness Center
- 7 Cafeteria
- 8 Outdoor Pool



# 1+1 Floor Plan

NET ..... 67.38 m<sup>2</sup>  
GROSS ..... 124.05 m<sup>2</sup>  
GENERAL GROSS ..... 166.90 m<sup>2</sup>

1 Entrance Hall ..... 5.89 m<sup>2</sup>  
2 Kitchen ..... 11.83 m<sup>2</sup>  
3 Living Room ..... 28.09 m<sup>2</sup>  
4 Bathroom1 ..... 6.55 m<sup>2</sup>  
5 Bedroom1 ..... 15.02 m<sup>2</sup>  
6 Deck ..... 25.18 m<sup>2</sup>  
Garden ..... 14.72 m<sup>2</sup>



FOLKART YAPI SANAYI VE TICARET A.Ş. reserves the right to make any changes it deems technically necessary.  
Floor garden, terrace and apartments have been decorated for esthetic purposes.

# 2+1 Floor Plan

NET ..... 89.76 m<sup>2</sup>  
GROSS ..... 125.58 m<sup>2</sup>  
GENERAL GROSS ..... 171.30 m<sup>2</sup>

1 Entrance Hall ..... 5.78 m<sup>2</sup>  
2 Kitchen ..... 12.32 m<sup>2</sup>  
3 Living Room ..... 24.53 m<sup>2</sup>  
4 Bathroom1 ..... 7.81 m<sup>2</sup>  
5 Bathroom2 ..... 5.27 m<sup>2</sup>  
6 Bedroom1 ..... 17.74 m<sup>2</sup>  
7 Bedroom2 ..... 14.15 m<sup>2</sup>  
8 Hallway ..... 2.16 m<sup>2</sup>  
9 Deck ..... 13.64 m<sup>2</sup>  
Garden ..... 3.53 m<sup>2</sup>

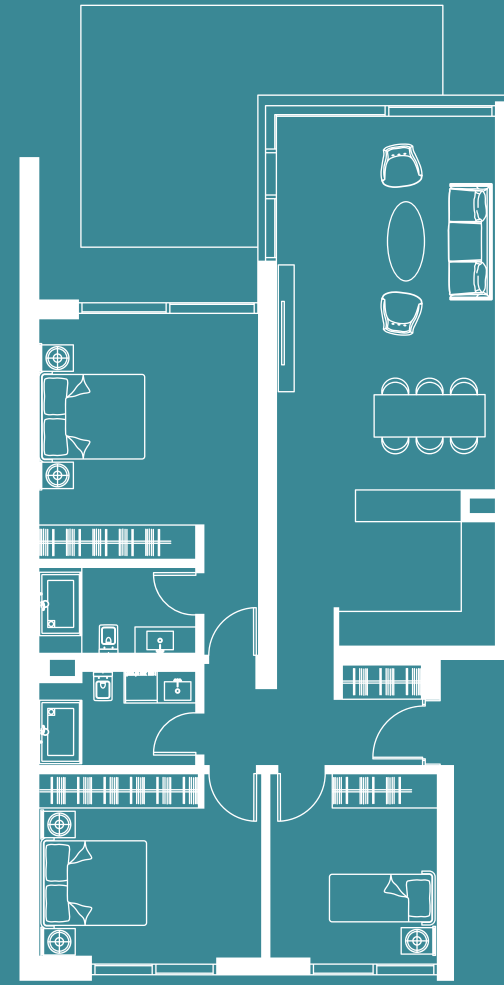


# 3+1

## Floor Plan

NET ..... 107.32 m<sup>2</sup>  
GROSS ..... 219.16 m<sup>2</sup>  
GENERAL GROSS ..... 310.30 m<sup>2</sup>

1 Entrance Hall	7.3 m <sup>2</sup>
2 Kitchen	7.0 m <sup>2</sup>
3 Living Room	29.8 m <sup>2</sup>
4 Bathroom1	2.4 m <sup>2</sup>
5 Bathroom2	4.8 m <sup>2</sup>
6 Bedroom1	21.7 m <sup>2</sup>
7 Bedroom2	18.1 m <sup>2</sup>
8 Bedroom3	5.1 m <sup>2</sup>
9 Deck	21.3 m <sup>2</sup>
Garden	5.8 m <sup>2</sup>



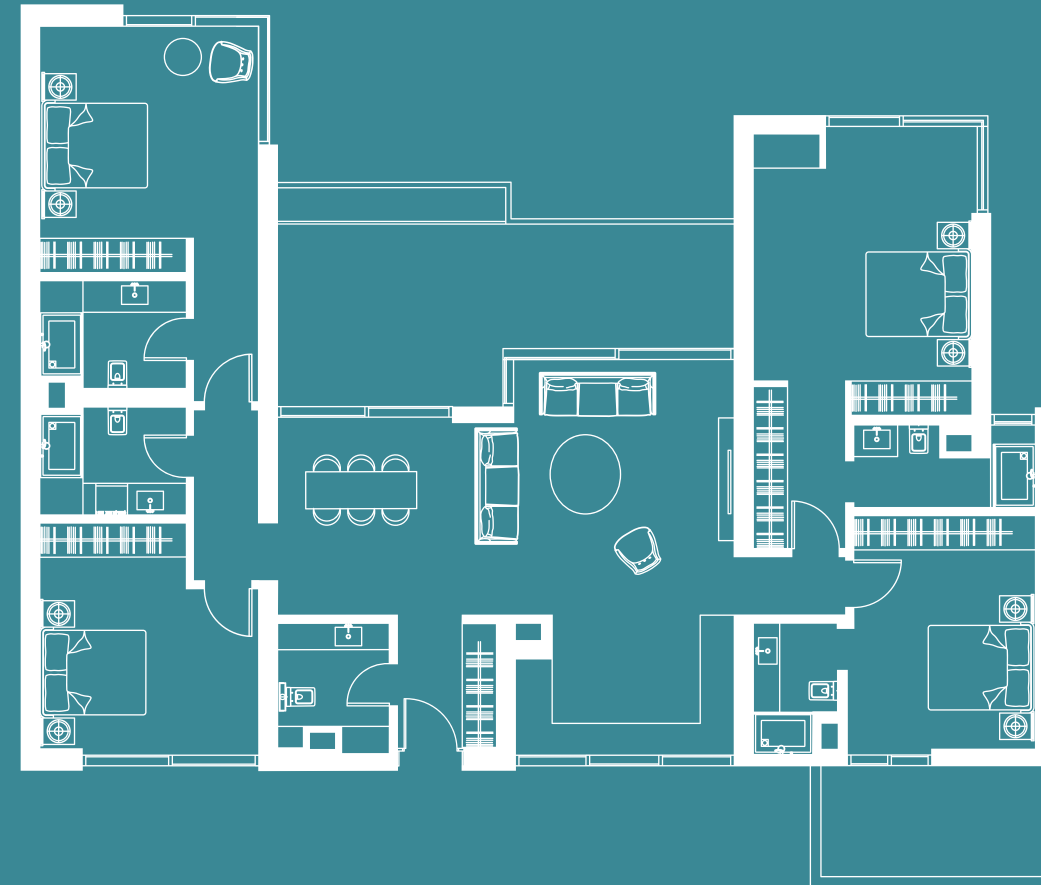
FOLKART YAPI SANAYI VE TICARET A.Ş. reserves the right to make any changes it deems technically necessary.  
Floor garden, terrace and apartments have been decorated for esthetic purposes.

# 4+1

## Floor Plan

NET ..... 165.31 m<sup>2</sup>  
 GROSS ..... 245.57 m<sup>2</sup>  
 GENERAL GROSS ..... 316.60 m<sup>2</sup>

1 Entrance Hall	4.77 m <sup>2</sup>
2 Kitchen	10.42 m <sup>2</sup>
3 Living Room	36.91 m <sup>2</sup>
4 Bathroom 1	5.48 m <sup>2</sup>
5 Bathroom 2	5.56 m <sup>2</sup>
6 Bathroom 3	4.79 m <sup>2</sup>
7 Bathroom 4	3.60 m <sup>2</sup>
8 Bathroom 5	4.80 m <sup>2</sup>
9 Bedroom 1	22.38 m <sup>2</sup>
10 Bedroom 2	16.41 m <sup>2</sup>
11 Bedroom 3	26.82 m <sup>2</sup>
12 Bedroom 4	15.83 m <sup>2</sup>
13 Hallway	4.77 m <sup>2</sup>
14 Hallway 2	2.61 m <sup>2</sup>
15 Deck	25.77 m <sup>2</sup>
16 Deck 2	25.77 m <sup>2</sup>
Garden	11.66 m <sup>2</sup>



FOLKART YAPI SANAYİ VE TİCARET A.Ş. reserves the right to make any changes it deems technically necessary.  
 Floor garden, terrace and apartments have been decorated for esthetic purposes.







[www.folkartcesme.com](http://www.folkartcesme.com)

For All Folkart Projects:

[www.folkart.com.tr](http://www.folkart.com.tr)

FOLKART YAPI SANAYI VE TİCARET A.Ş. reserves the right to make any changes it deems technically necessary.

Tasarım :  NEVCREATIVE