

# FOLKART

## Yakaevleri

[www.folkartyakaevleri.com](http://www.folkartyakaevleri.com)

**444 22 78**

**FOLKART**  
Çakaevleri

FOLKART SIGNATURE  
IN KARŞIYAKA!

**FOLKART**  
yaşadıkları

## A NEW LIFE IS BEGINNING IN KARŞIYAKA!

*Welcome to a comfortable and  
safe life in Karşıyaka.*

Located in one of the most central points of  
Izmir, Folkart Yaka Evleri is ready to offer  
a new, safe and comfortable life in Karşıyaka!  
With 130 residences and 13 commercial areas,  
the project reflects Folkart quality in every  
square meter with its 1 + 1, 2 + 1, 3 + 1  
apartment types.

# FOLKART Yakaevleri

## LIVE IN THE CENTER OF LIFE!

The project is located at a central point of the city, close to shopping centers, universities, hospitals and highway connections. While living in Folkart Yaka Houses, Izmir will be right within your reach.



## LOCATION

Private Metropol Medical Center	3 km
Medical Park Izmir Hospital	2 km
Private Park Medical Center	2 km
Bostanlı Pier	4,5 km

Karşıyaka Pier	3,5 km
Izmir City Hospital	6,5 km
Westpark Shopping Center	6,5 km
Izmir Beltway	940 m

DISTANCES	
Anadolu Highway	1,5 km
Mavibahçe Shopping Center	6,5 km
Ege University Health Sciences Faculty	10 km

# FOLKART Çıkartmaları

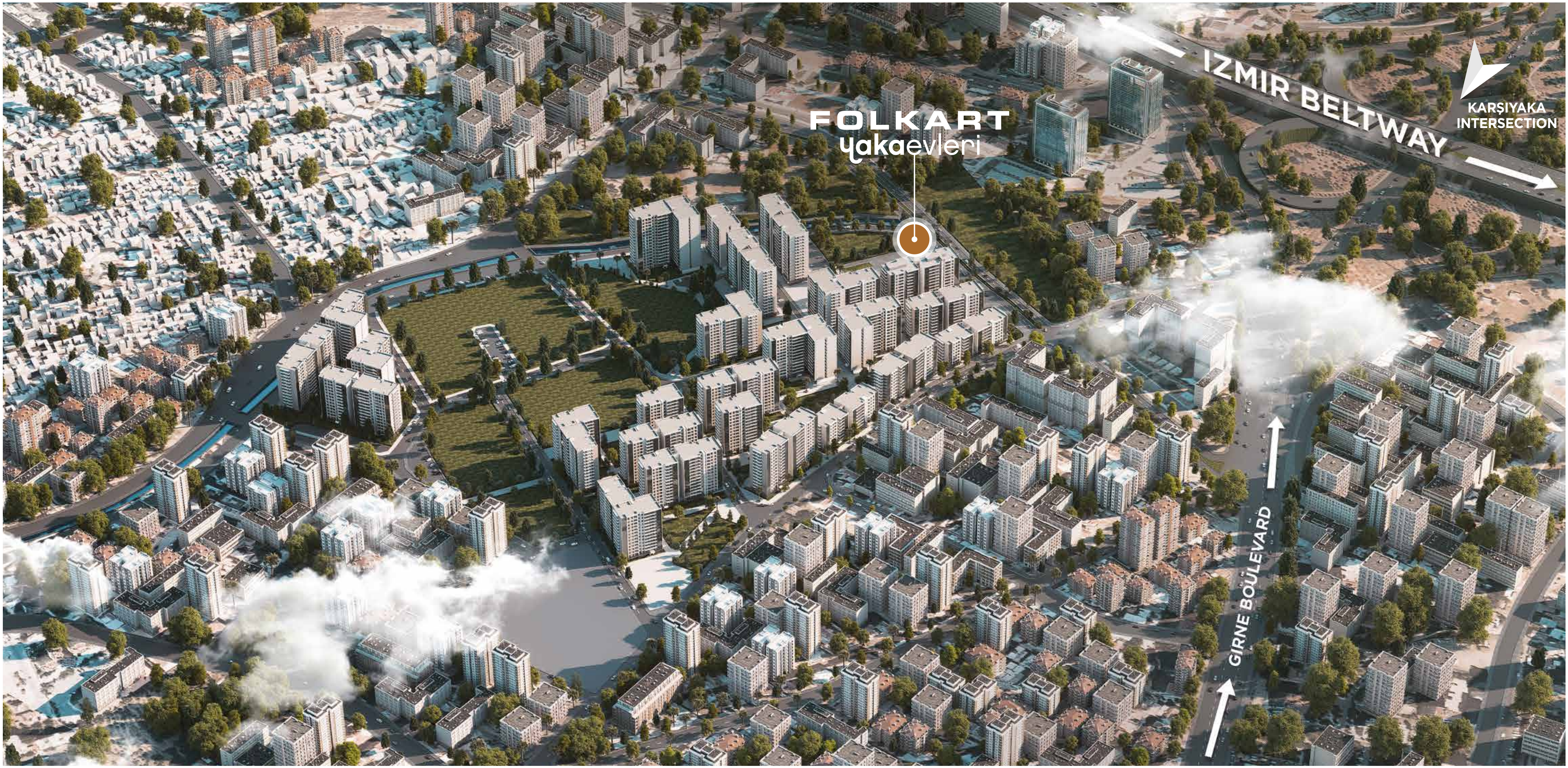


İZMİR BELTWAY



KARŞIYAKA  
INTERSECTION

GİRNE BOULEVARD



IN THE CENTER OF KARŞIYAKA,  
WITH FOLKART QUALITY ...

# FOLKART Çıkaevleri



## LAYOUT PLAN



- UNDERGROUND CAR PARK
- SPORTS AND PLAYGROUND
- RECREATIONAL AREA
- SHOPPING AREA
- PARK

**FOLKART**  
Yakaevleri





## A VALUABLE INVESTMENT

Karşıyaka's brand value meets  
**with the Folkart name.**

Karşıyaka is, without a doubt, among the most important districts in Izmir, one of Turkey's most livable cities. Folkart Yaka Evleri aims to make the region more attractive by adding the Folkart name to Karşıyaka's existing features. Folkart Yaka Evleri is a unique opportunity for those who want to make a profitable investment in Izmir with Folkart assurance!





## SOCIAL OPPORTUNITIES

It's time to open your doors  
to a social and enjoyable life...

Folkart Yaka Evleri combines a lifestyle of comfort with a location full of rich social opportunities. Get into the swing of things by paying a visit to the region's forthcoming shopping center, catch the rhythm of life in sports halls, or refresh body and soul in the recreation area.







Cafe Intento  
... coffee

**FOLKART**  
Çakaevleri





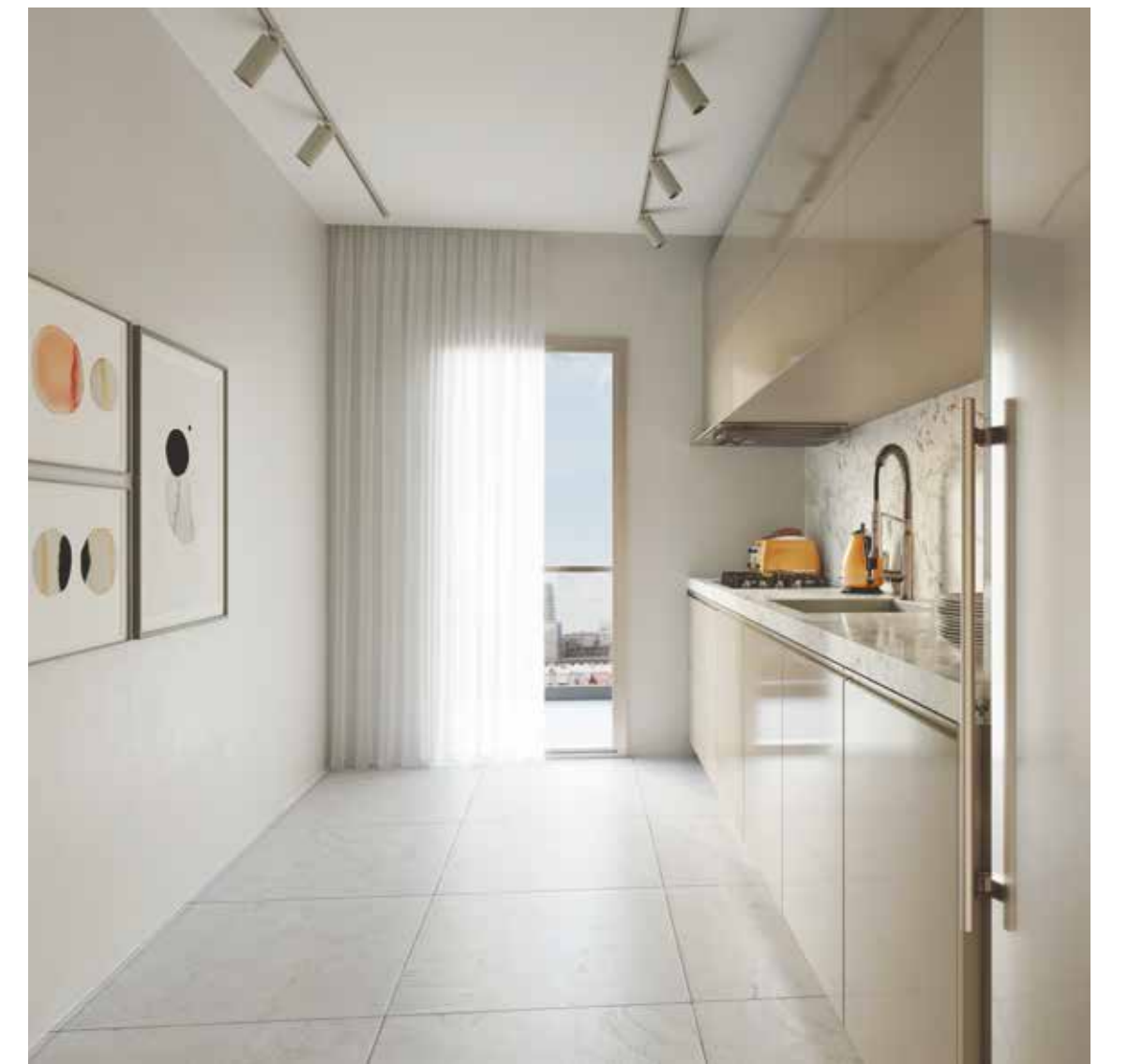


Add a new plus to your lifestyle.  
**Folkart Yaka Evleri.**

Folkart Yaka Evleri carries the Folkart signature with its name. This means the experience and quality of Turkey's leading brand for living is always at your side. Another prominent addition of the project is the offer of a comfortable and social life in the center of the city, which is distinguished by modern details.







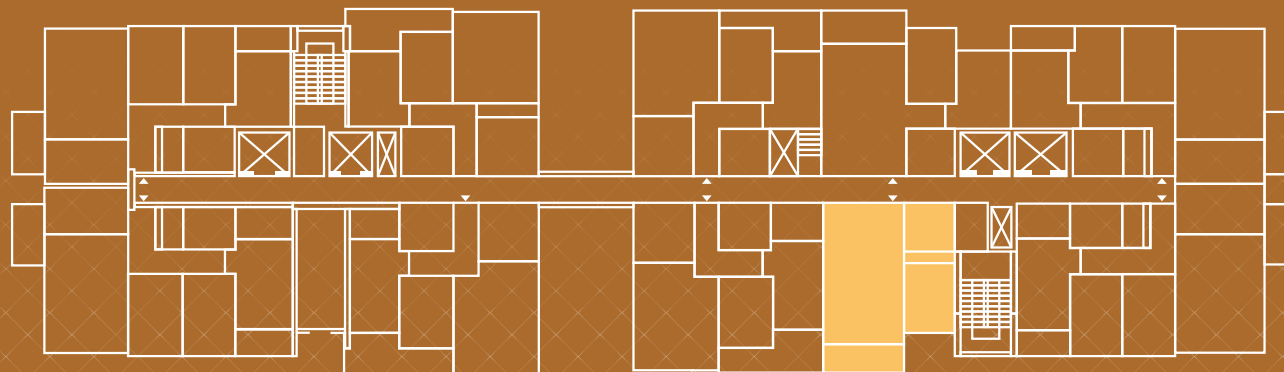




# 1+1

NET AREA (Excluding Balcony) : 41,4 m<sup>2</sup> | GROSS AREA : 55,91 m<sup>2</sup> | GENERAL AREA : 69,32 m<sup>2</sup>

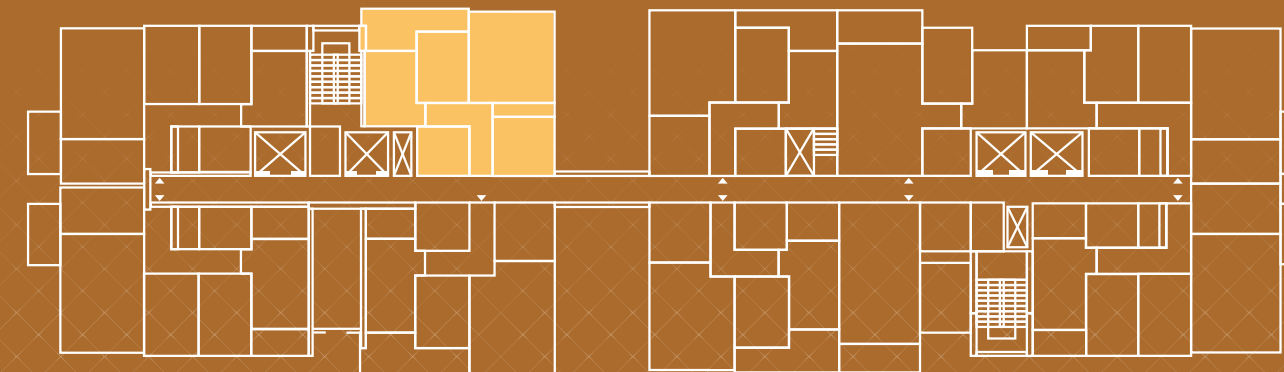
1 Living Room + Kitchen	22,69	m <sup>2</sup>
2 Entrance Hall	4,1	m <sup>2</sup>
3 Bathroom	4,55	m <sup>2</sup>
4 Bedroom	10,06	m <sup>2</sup>
5 Balcony	5,46	m <sup>2</sup>



NET AREA (Excluding Balcony) : 58,98 m<sup>2</sup> | GROSS AREA : 80,35 m<sup>2</sup> | GENERAL AREA : 99,63 m<sup>2</sup>

# 2+1 A

1 Living Room	20,77	m <sup>2</sup>
2 Kitchen	7,17	m <sup>2</sup>
3 Entrance Hall	6,95	m <sup>2</sup>
4 Bedroom 1	8,99	m <sup>2</sup>
5 Bedroom 2	10,44	m <sup>2</sup>
6 Bathroom	4,66	m <sup>2</sup>
7 Balcony	7,52	m <sup>2</sup>

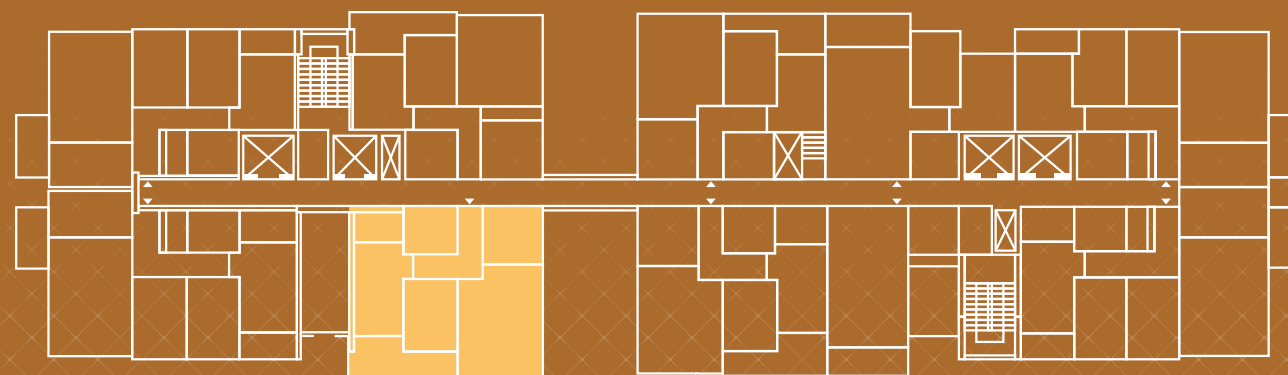




# 2+1 B

NET AREA (Excluding Balcony) : 64,12 m<sup>2</sup> | GROSS AREA : 87,97 m<sup>2</sup> | GENERAL AREA : 109,08 m<sup>2</sup>

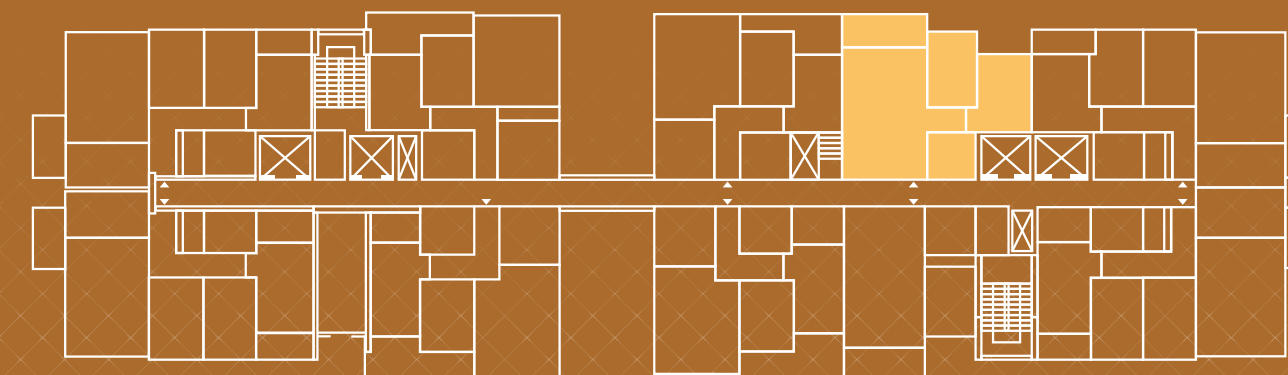
- 1 Living Room + Kitchen \_\_\_\_ 21,39 m<sup>2</sup>
- 2 Kitchen \_\_\_\_ 7,17 m<sup>2</sup>
- 3 Entrance Hall \_\_\_\_ 6,95 m<sup>2</sup>
- 4 Bedroom 1 \_\_\_\_ 8,61 m<sup>2</sup>
- 5 Bedroom 2 \_\_\_\_ 11,82 m<sup>2</sup>
- 6 Bathroom 1 \_\_\_\_ 3,61 m<sup>2</sup>
- 7 Bathroom 2 \_\_\_\_ 4,57 m<sup>2</sup>
- 8 Balcony \_\_\_\_ 8,75 m<sup>2</sup>



# 2+1 C

NET AREA (Excluding Balcony) : 52,61 m<sup>2</sup> | GROSS AREA : 69,02 m<sup>2</sup> | GENERAL AREA : 85,58 m<sup>2</sup>

- 1 Living Room + Kitchen \_\_\_\_ 20,96 m<sup>2</sup>
- 2 Entrance Hall \_\_\_\_ 6,7 m<sup>2</sup>
- 3 Bedroom 1 \_\_\_\_ 8,88 m<sup>2</sup>
- 4 Bedroom 2 \_\_\_\_ 11,32 m<sup>2</sup>
- 5 Bathroom \_\_\_\_ 4,75 m<sup>2</sup>
- 6 Balcony \_\_\_\_ 6,7 m<sup>2</sup>

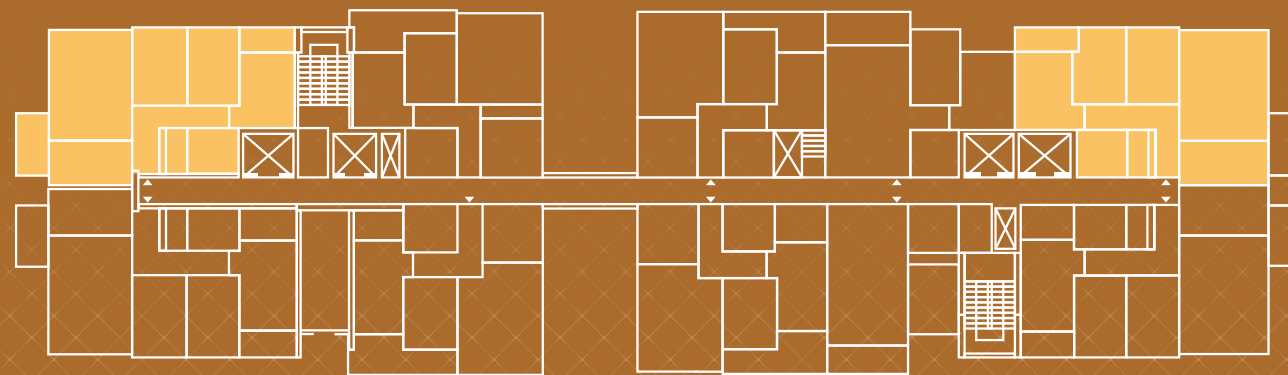




# 3+1 A

NET AREA (Excluding Balcony) : 77,98 m<sup>2</sup> | GROSS AREA : 99,82 m<sup>2</sup> | GENERAL AREA : 123,77 m<sup>2</sup>

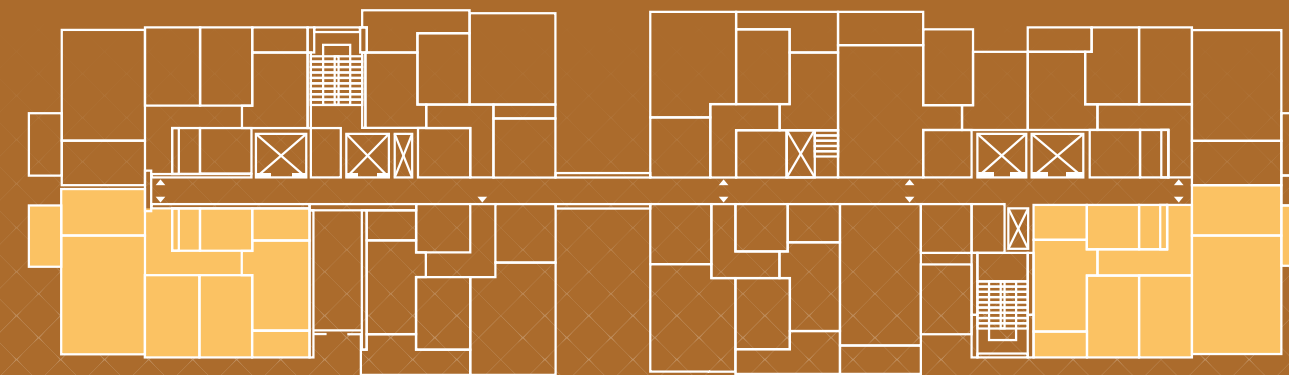
1 Living Room	23,08	m <sup>2</sup>
2 Kitchen	9,07	m <sup>2</sup>
3 Entrance Hall	8,88	m <sup>2</sup>
4 Bedroom 1	9,63	m <sup>2</sup>
5 Bedroom 2	9,4	m <sup>2</sup>
6 Bedroom 3	11,26	m <sup>2</sup>
7 Bathroom	4,68	m <sup>2</sup>
8 Toilet	1,98	m <sup>2</sup>
9 Balcony 1	4,66	m <sup>2</sup>
10 Balcony 2	2,51	m <sup>2</sup>



# 3+1 B

NET AREA (Excluding Balcony) : 86,78 m<sup>2</sup> | GROSS AREA : 111,58 m<sup>2</sup> | GENERAL AREA : 138,35 m<sup>2</sup>

1 Living Room	24,57	m <sup>2</sup>
2 Kitchen	9,88	m <sup>2</sup>
3 Entrance Hall	8,74	m <sup>2</sup>
4 Bedroom 1	9,88	m <sup>2</sup>
5 Bedroom 2	10,03	m <sup>2</sup>
6 Bedroom 3	13,17	m <sup>2</sup>
7 Bathroom 1	3,89	m <sup>2</sup>
8 Bathroom 2	4,64	m <sup>2</sup>
9 Storeroom	1,98	m <sup>2</sup>
10 Balcony 1	4,51	m <sup>2</sup>
11 Balcony 2	3,00	m <sup>2</sup>





FOLKART SIGNATURE IN KARŞIYAKA

**FOLKART**  
yaşadıkları



# FOLKART

Yakaevleri

444 22 78

[www.folkart.com.tr](http://www.folkart.com.tr)

[www.folkartyakaevleri.com](http://www.folkartyakaevleri.com)

FOLKART